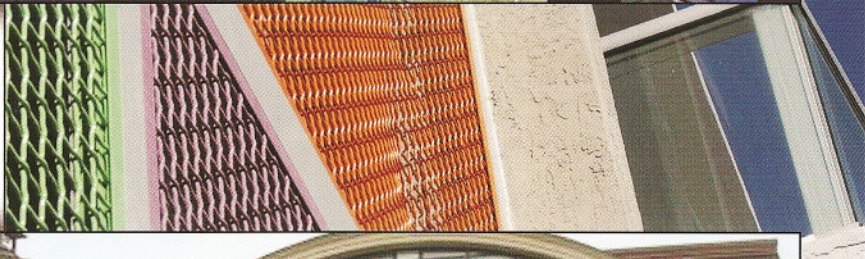




Architectural Powder Coatings



louvers lighting fixtures shutters door frames railings store fronts
stadium seating window frames storm shutters curtain wall skylights

COLOR

SELECTOR

800-767-2335

(no clear coat required)

Metallic Finishes



Sandstone
NEWLAR™ PF4276T
ARC 2001™ PSP4210W



Sierra Tan
NEWLAR™ PF4225T
ARC 2001™ PSP4211W



El Cajon Silver
NEWLAR™ PFY3801Q
ARC 2001™ PSPY3833Q



Terra Cotta
NEWLAR™ PF4472G
ARC 2001™ PSP4414K



Colonial Red
NEWLAR™ PF4468G
ARC 2001™ PSP4416K



Champagne
NEWLAR™ PFY3806Q
ARC 2001™ PSPY3867Y



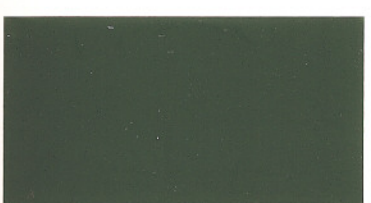
Regal Brown
NEWLAR™ PF4228T
ARC 2001™ PSP4212W



Dark Brown
NEWLAR™ PF4287T
ARC 2001™ PSP4214W



Light Bronze
NEWLAR™ PFY3836Q
ARC 2001™ PSPY3868Y



Forest Green
NEWLAR™ PF4574H
ARC 2001™ PSP4543J



Hartford Green
NEWLAR™ PF4575G
ARC 2001™ PSP4542J



Medium Bronze
NEWLAR™ PFY3837Q
ARC 2001™ PSPY3869Y



Coal Black
NEWLAR™ PF3984C
ARC 2001™ PSP3960D



Weathered Brown
NEWLAR™ PF1863Q
ARC 2001™ PSP280083



Dark Bronze
NEWLAR™ PFY3838Q
ARC 2001™ PSPY3870Y

from actual coating due to the effects of heat, light and manufacturing process.

C
O
L
O
R

S
E
L
E
C
T
O
R

Stone White

NEWLAR™ PF3180L
ARC 2001™ PSP3112M



Bone White

NEWLAR™ PF4170I
ARC 2001™ PSP4186J



Apollo White

NEWLAR™ PF4193P
ARC 2001™ PSP6176N



Pebble Grey

NEWLAR™ PF320235
ARC 2001™ PSP320302



Seawolf

NEWLAR™ PF4202T
ARC 2001™ PSP420303



Slate Grey

NEWLAR™ PF4613S
ARC 2001™ PSP4602U



Tan

NEWLAR™ PF320324
ARC 2001™ PSP320715



Burgundy

NEWLAR™ PF4452G
ARC 2001™ PSP4415K



Antique Bronze

NEWLAR™ PF4227T
ARC 2001™ PSP4213W



Evergreen

NEWLAR™ PF3510N
ARC 2001™ PSP3535N



Hemlock Green

NEWLAR™ PF4565H
ARC 2001™ PSP4544J



Patina Green

NEWLAR™ PF4573H
ARC 2001™ PSP4545J



Caramel

NEWLAR™ PF220678
ARC 2001™ PSP220713

Light Blue

NEWLAR™ PF4767I
ARC 2001™ PSP4786J

Teal

NEWLAR™ PF4768I
ARC 2001™ PSP4787J

The products represented in this brochure have been prepared as replications of actual powder coatings. Chips may vary slightly in color and gloss.
NEWLAR AND ARC 2001 are registered trademarks of Spraylat Corporation.

Product Facts

NEWLAR™

- 100% Fluoropolymer Thermosetting Resin System
- Performs to AAMA 2605 specification
- 15-year warranty for approved applicators

ARC 2001™

- Proprietary Thermosetting Resin System
- Meets AAMA 2604
- 5-year warranty available

Features

- Environmentally-friendly
- Zero VOC's (Volatile Organic Compounds)
- Supports the Green Building Initiative
- Contributes toward LEED* points
- Excellent weathering characteristics
- One-coat application with no primer needed
- Low cure technology conserves energy and increases the surface integrity of the coated part
- Powder is reclaimable minimizing cost
- Scratch and mar resistant
- Superior color and gloss retention

*(Leadership in Energy and Environmental Design)

Performance Comparison

Property	NEWLAR™	ARC 2001™
Gloss Range (60°)	25-70%	30-95%
Std. Cure Temperature	400°F / 15 min.	400°F / 10 min.
Cure Parameter	420°F / 7 min. 400°F / 15 min. 380°F / 20 min.	410°F / 8 min. 400°F / 10 min. 380°F / 18 min.
Film Thickness	1.5 - 3.0 mils	1.5 - 3.0 mils
Impact on Aluminum Panel (4mm Deformation)	Pass	Pass
Flexibility	1/8"	1/8"
Hardness	3H - 4H	2H
Adhesion	5B	5B
Abrasion Resistance [ASTM D968] (Coefficient value min. 40)	Pass	Pass
Humidity (Aldine Panel, 22 gauge Chromated Aluminum Substrate)	4000 hrs. Blister rating: Minimum 8	3000 hrs. Blister rating: Minimum 8
Salt Spray Test (Aldine Panel, 22 gauge Chromated Aluminum Substrate)	4000 hrs. < 2 mm. creepage	3000 hrs. < 2 mm. creepage
South Florida Exposure	2900 MJ, EMMAQUA* (approx. 10yrs. South Florida) Gloss retention: > 50% Color retention: ΔE < 5.0	5 yrs., South Florida Gloss retention: > 40% Color retention: ΔE < 5.0

*Equatorial Mount with Mirrors for Acceleration with Water (Arizona test site)

Spraylat Powder Coating Product References

Resin Group	Gloss Level (60° Gloss Meter)	Color Group	Sequential
PF - Fluoropolymer	6 - Semi-Gloss	1 - White	6 - Gray
PSP - Super Polyester	4 - Low Semi-Gloss	2 - Tan / Brown	7 - Blue
	3 - Satin	3 - Yellow	8 - Metallic / Specialty
	2 - Eggshell	4 - Orange / Red	9 - Black
	1 - Matte	5 - Green	0 - Clear

For general information regarding Spraylat and our products, or for specific Architectural Powder Coatings help, access our Web site at:

www.spraylat.com

For product information or a color card, call **1-800-767-2335**

Spraylat Powder Coatings, LP

3333 North Interstate 35
Gainesville, Texas 76240
Phone: 940-665-9590
Fax: 940-665-8867

© 2007 Spraylat Corporation All rights reserved.

